



SMT
S O L I D

JUKI
JUKI AMERICA, INC.
ELECTRONIC ASSEMBLY SYSTEMS

RV-2 / RV 2 3D

INSPECTION

We offer complete SMT solutions with cutting-edge technology and specialized support.



MX 81-282-8092
US 10-791-8343





RV-2 / RV 2 3D

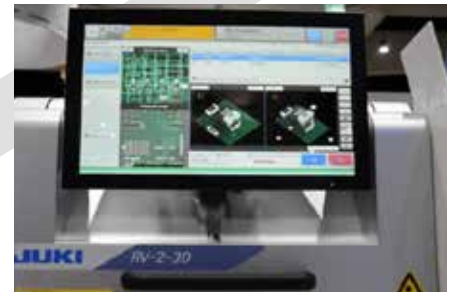
PWB VISUAL INSPECTION MACHINE (AOI/SPI)

Inline high-speed and high-precision board inspection machine!

JUKI's RV-2 and RV-2-3D redefine inline inspection with cutting-edge technology designed to enhance manufacturing quality and efficiency. These compact, space-saving solutions offer high-speed and high-precision inspection capabilities that seamlessly fit into a variety of production processes. Powered by innovative algorithms and advanced DLP projection technologies, the RV-2 series provides unparalleled accuracy in detecting missing components, solder defects, polarity issues, and much more.

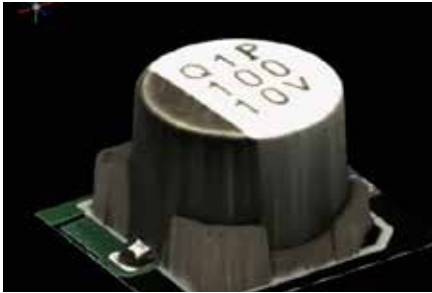
Engineered with flexibility and performance in mind, the RV-2-3D's advanced 3D projectors deliver sharp, reliable imaging without blur. Featuring a robust and energy-efficient design, this solution ensures minimal downtime and reduced operating costs. Whether you're seeking to optimize speed, streamline defect resolution, or ensure precision in every process, the RV-2/RV-2-3D series is the ultimate choice for modern electronics manufacturing.

MAXIMIZE PRECISION, SEE IN 3D.



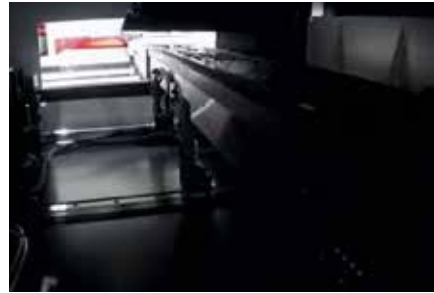
Clear Vision Capturing System

Crystal-clear inspections with cutting-edge vision capturing.



Advanced 3D Inspection Tools

Precision imaging with optional 3D inspection add-ons.



High-Speed Image Processing

Lightning-fast inspections at 0.14 sec/frame speed.



Central Confirmation Control (CCC)

Unified NG reviews for flawless quality control.

SPECIFICATION

| ITEM | | RV-2 /RV-2-3D | |
|----------------------------|----------------------------|---|---|
| Model | | 1,300 kg | |
| Board size | Single lane conveyor | 50mm×50mm-410mm×360mm 630mm×360mm (Long board option) | 50mm×50mm-410mm×300mm 50mm×50mm-630mm×300mm(Long board option) |
| Inspection resolution | | 15 μm (standard resolution) / 10 μm (high resolution) | |
| Display field angle | | 30.0 × 30.0mm, 20.0 x 20.0mm | |
| Item of inspection | | Missing component, Position displacement, Polarity, Front/Rear reversal, Unsoldered, Bridge, Quantity of solder, Missing insertion, Character recognition | |
| FOV (optimum) | 2D i-3D SPI P-3D AOI | 0.2 sec/1 frame 0.50 sec/1 frame | - - 0.41 sec/1 frame |
| Power supply | | AC 3-phase 200-230V | |
| Apparent power | | 2.0kVA or below | |
| Operating air pressure | | 0.05MPa | |
| Air consumption (standard) | | 10L/min | |
| Machine dimensions (WxDxH) | | 940 mm × 1,276 mm × 1,530 mm | |
| Mass (approximately) | | 1,000kg | |

Industrial solutions, innovation and precision.

Wilfredo Fonseca

CEO
wfonseca@solid-mfg.com
+1 (915) 777.1333

William Félix
Regional Sales Manager
wfelix@solid-mfg.com
+1 (915) 777.0739

Ramón Aguilar
Sales Executive
raguilar@solid-mfg.com
+52 (656) 144.5502

Maros Espinoza
Sales Manager
mespinoza@solid-mfg.com
+1 (915) 777.0766

Alan Santiesteban
Sales Executive
asanti@solid-mfg.com
+52 (656) 345.5806

Diego González
Sales Executive
dgonzalez@solid-mfg.com
+1 (915) 999.3434

Heriberto Huerta
Sonora Commercial Representative
hhuerta@solid-mfg.com
+52 (662) 417.6320

Enrique Torres
Sales
etorres@solid-mfg.com
+52 (33) 1974.5755

Francisco Zamudio
Business Development
fzamudio@solid-mfg.com
+1 (915) 343.2203

José Pérez
Sales
jperez@solid-mfg.com
+52 (656) 388.1220

Johanny Jacome
Northeast Sales Manager
jjacome@solid-mfg.com
+52 (81) 2080.8334

José Luis Díaz
Commercial Manager Tijuana
jdiaz@solid-mfg.com
+52 (656) 754.2302

Saúl Ramírez
Automation Manager
sramirez@solid-mfg.com
+1 (915) 777.1175

Jaime Chavarría
Service Technician
jchavarría@solid-mfg.com
+1 (915) 777.1136

Emiliano Zamudio
Technical Support
emiz@solid-mfg.com
+52 (656) 806.7193

José Luna
Field Service Engineer
jluna@solid-mfg.com
+52 (656) 345.5796



OFFICES IN MEXICO AND THE UNITED STATES

Offices in Mexico

#2225 Parque Industrial Fernández C.P. 32649
Cd. Juárez, Chih. Méx.
Ph. +52 (656) 624.1530

Offices in the USA

1410 Gail Borden C-4
El Paso, TX. 79935
Ph. +1 (915) 300.2401

More information

info@solid-mfg.com
www.solid-mfg.com

