



**SMT**  
S O L I D

**JUKI**  
JUKI AMERICA, INC.  
ELECTRONIC ASSEMBLY SYSTEMS

# LX-8

**PICK AND PLACE**

We offer complete SMT solutions with cutting-edge technology and specialized support.



MX 81-282-8092  
US 10-791-8343





# LX-8

## ADVANCED FLEXIBLE MOUNTER

2 Head High-speed placement and area production are achieved

### HIGH PRODUCTIVITY

**Achieves high-efficiency production through high area productivity and ultra-high speed equipment of the highest level in its class**

It boasts the highest 105,000CPH in its class\*, and is equipped with ultra-high speed, space-saving features, while boasting high area productivity and achieving highly efficient production.



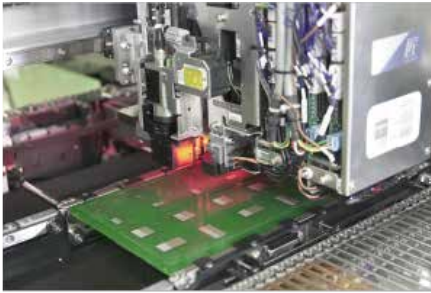
Left and right heads can be freely combined.

### PLANET HEAD P20S/TAKUMI HEAD, SELECTABLE FOR EACH CHARACTERISTIC

#### P20S head

Planet head P20S has a planet-head construction that sucks continuously with 20 nozzles. Even a very small part of 0201 achieves stable suction reliability.





### Takumi head

TAKUMI head for high-precision laser recognition adjusts head height to match placement component height. High-speed mounting is realized at the optimum height from very small parts to large parts.



### Feeder-mounted number-class No.1

The number of feeder slots is 160 or more, the highest in the class. Since it is possible to set the next feeder for production in the feeder bank beforehand, the setup change time can be drastically shortened, and production preparation can be simplified and made more efficient.



### New User Interface pursuing ease of use

A smartphone-like operating feel that can be operated with intuition, color-conscious for all users and easy-to-view screens in dark themes, and high-priority functions have been placed on the top screen. This is a new type of operation panel that pursues ease of use.

## HIGH FLEXIBILITY

### Head replacement

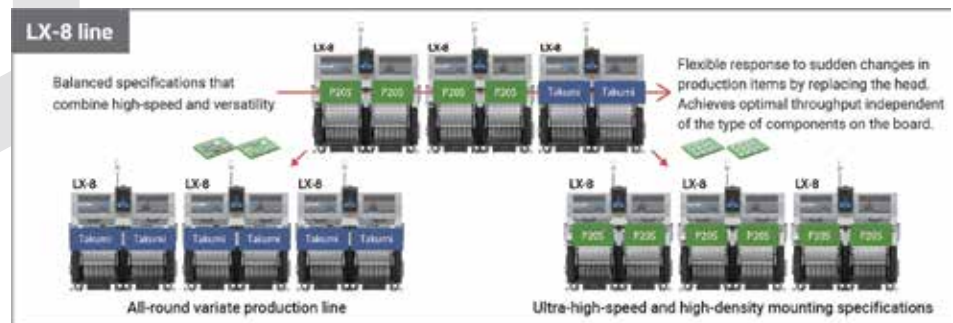
The head of LX-8 can be replaced. By simply placing the heads optimally without changing the line layout, the machine can flexibly respond to variable and variable-quantity production.



Left and right heads can be freely combined.

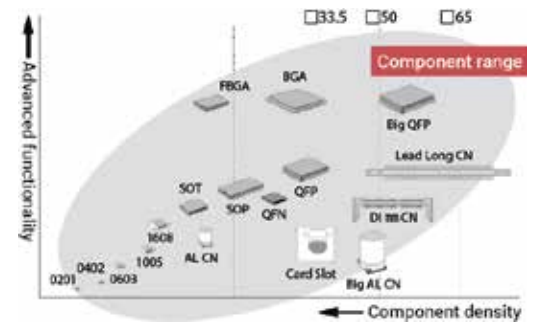
### Flexible head configuration

Head can be replaced by the user. It can flexibly respond to changes in production boards.



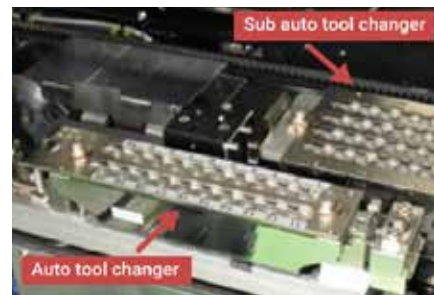
## Wide component range

Supports components from 0201\* (metric) up to 65 mm square or 10 x 90 mm. In addition, component height up to 22 mm, so it is possible to mount a wide range of components.



## Large parts are supplied in trays

This function quickly and accurately inserts and positions support pins used to stabilize the board during production. Once production is complete, the support pins are automatically returned to the stocker. By automating the setup and retrieval of support pins, this feature significantly enhances work efficiency.



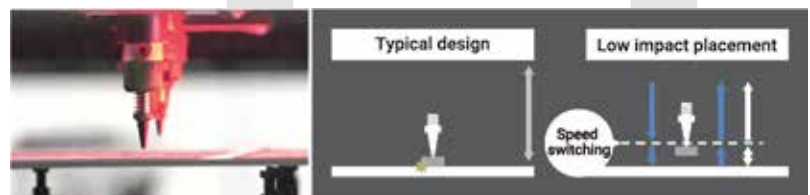
## Takumi SUB-ATC unit

By incorporating a sub auto tool changer into the standard auto tool changer, the number of available nozzle stocks can be increased to 88. This addition reduces setup times during production transitions and boosts overall operational efficiency.

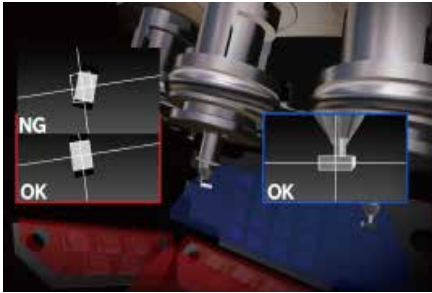
## HIGH QUALITY

### Low impact placement for flexible circuits

Low impact feature allows separately adjusting the down and up speed of the nozzle during placement. This minimizes the load on the part and on the board during placement. This is optimal for placing very small parts that require a lot of accuracy.

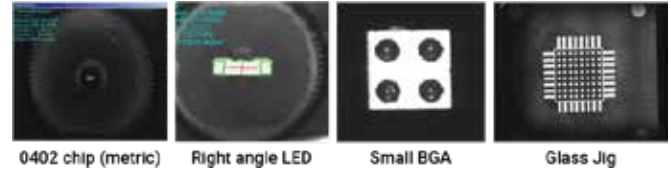


## P20S HEAD



### State-of-the-art centering and inspection vision system

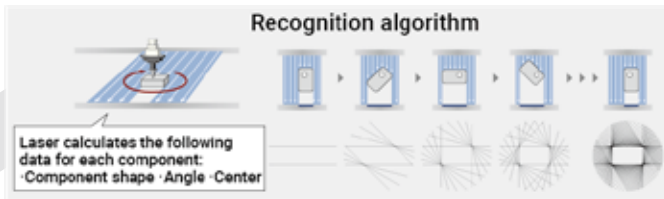
With Planet head P20S, it is possible to detect the reversal of the front and back sides, inspect the tip standing, and detect the presence or absence of components. Realizes high-quality mounting of extremely small parts.



### New high accuracy image-recognition for inspection and centering

Coaxial lighting technology with a new structure enables clearer imaging and realizes high-precision onboard recognition.

## TAKUMI HEAD

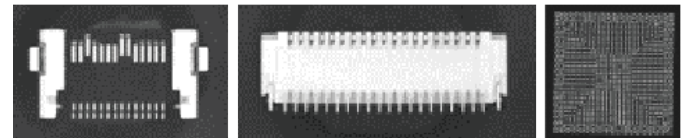


### Realizes high-speed, high-precision recognition with JUKI's proud laser-recognition technique

Various component shape can be recognized, such as SOP, QFP, BGA from 03015 minimal component to  $\phi$ 50mm. Laser recognition realizes stable recognition and mounting without being affected by component variations such as electrode-shape and gloss.

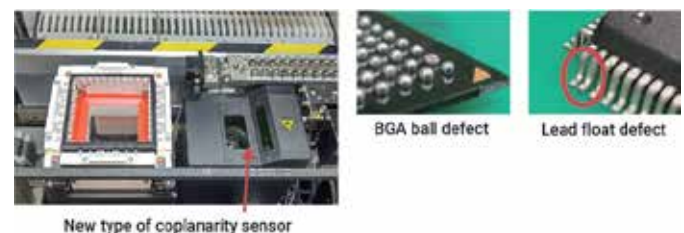
### New type of coplanarity sensor

Simultaneous image-recognition and coplanarity inspection greatly improves placement tact compared with the conventional machine. High accuracy and high speed coplanarity checking prevent placement of defective component and enhance the reliability of the device.



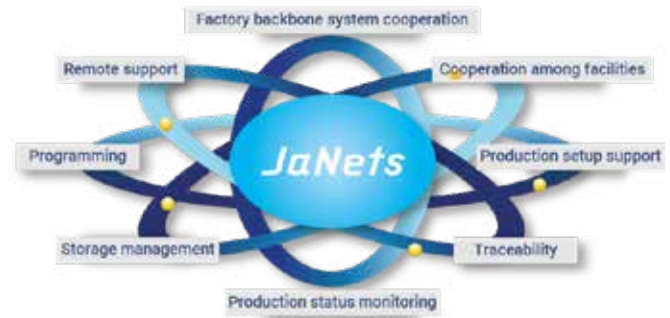
### Reduction of VCS image-recognition times

The adoption of an image-processing library HALCON has greatly reduced image-recognition times using VCS. It realizes high-speed recognition and mounting in not only chip components but also large components.



## Integrates seamlessly with the production environment

SMT total system software JaNets and the system connected via JaNets help improve production efficiency across the entire plant by monitoring production status, storage-management, and remote-support. In addition, IFS-NX option enables high-quality production, such as traceability and component mis-mounting protection.



## SPECIFICATION

ADVANCED FLEXIBLE MOUNTER LX-8				
		P20S×P20S	P20S×Takumi	TakumixTakumi
Board size	Minimum	50×50mm		
	Single clamping	410×400mm		
	Double clamping*1	810×400mm*2		
Component height		3mm	22mm	
Component size	Minimum	0201*1		03015
	Maximum	5 mm	65 mm /10 mm ×90 mm /50 mm ×75 mm	
Placement speed (optimum)		105,000CPH	99,500CPH	94,000CPH
Placement accuracy		±40μm(Cpk ≥1)	±35μm (Cpk 1)*3	
Feeder capacity	Tape	Max. 136	Max. 148	Max. 160
	Tray*4	-	Max. 30	Max. 60
Power		3-phase AC200V (standard) AC200V ~ AC415V (when optional transformer is selected)		
Apparent power		2.49kVA		
Operating air pressure		0.5±0.05MPa		
Air consumption (standard)		50L/min(ANR)		
Machine dimensions (WxDxH)*5		1,600 mm ×1,924 mm ×1,440 mm		
Mass (approximately)		2,400kg or less		

\*1 Please contact for detail

\*2 Factory default

\*3 For laser recognition

\*4 For TR8SR

\*5 D dimension does not include the front operation monitor. H dimension does not include signal tower.

## Industrial solutions, innovation and precision.

**Wilfredo Fonseca**

**CEO**  
wfonseca@solid-mfg.com  
+1 (915) 777.1333

**William Félix**  
**Regional Sales Manager**  
wfelix@solid-mfg.com  
+1 (915) 777.0739

**Ramón Aguilar**  
**Sales Executive**  
raguilar@solid-mfg.com  
+52 (656) 144.5502

**Maros Espinoza**  
**Sales Manager**  
mespinoza@solid-mfg.com  
+1 (915) 777.0766

**Alan Santiesteban**  
**Sales Executive**  
asanti@solid-mfg.com  
+52 (656) 345.5806

**Diego González**  
**Sales Executive**  
dgonzalez@solid-mfg.com  
+1 (915) 999.3434

**Heriberto Huerta**  
**Sonora Commercial Representative**  
hhuerta@solid-mfg.com  
+52 (662) 417.6320

**Enrique Torres**  
**Sales**  
etorres@solid-mfg.com  
+52 (33) 1974.5755

**Francisco Zamudio**  
**Business Development**  
fzamudio@solid-mfg.com  
+1 (915) 343.2203

**José Pérez**  
**Sales**  
jperez@solid-mfg.com  
+52 (656) 388.1220

**Johanny Jacome**  
**Northeast Sales Manager**  
jjacome@solid-mfg.com  
+52 (81) 2080.8334

**José Luis Díaz**  
**Commercial Manager Tijuana**  
jdiaz@solid-mfg.com  
+52 (656) 754.2302

**Saúl Ramírez**  
**Automation Manager**  
sramirez@solid-mfg.com  
+1 (915) 777.1175

**Jaime Chavarria**  
**Service Technician**  
jchavarria@solid-mfg.com  
+1 (915) 777.1136

**Emiliano Zamudio**  
**Technical Support**  
emiz@solid-mfg.com  
+52 (656) 806.7193

**José Luna**  
**Field Service Engineer**  
jluna@solid-mfg.com  
+52 (656) 345.5796



## OFFICES IN MEXICO AND THE UNITED STATES

### Offices in Mexico

#2225 Parque Industrial Fernández C.P. 32649  
Cd. Juárez, Chih. Méx.  
Ph. +52 (656) 624.1530

### Offices in the USA

1410 Gail Borden C-4  
El Paso, TX. 79935  
Ph. +1 (915) 300.2401

### More information

info@solid-mfg.com  
www.solid-mfg.com

