



**SMT**  
S O L I D

**JUKI**  
JUKI AMERICA, INC.  
ELECTRONIC ASSEMBLY SYSTEMS

# G-TITAN

**PRINTING**

We offer complete SMT solutions with cutting-edge technology and specialized support.



MX 81-282-8092  
US 10-791-8343





# G-TITAN

**INSIGHT INTO  
THE FUTURE**

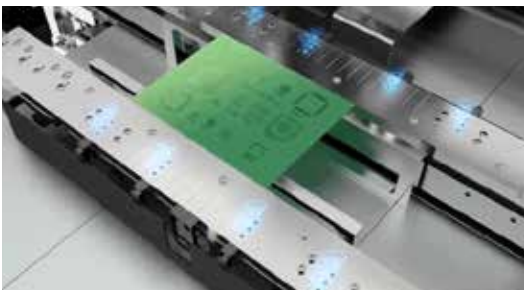
Nothing is more important than a good print. The G-Titan offers a GREAT print!

JUKI's G-Titan is engineered to meet the growing demands of modern SMT manufacturing. Packed with innovative features like Solder Paste Rolling Measurement, Stencil Lock, Auto paste dispense with OPC (optimum paste control) squeegees, Flexible Auto Clamp (FAC) System, and Stencil Position Memory (SPM), the G-Titan streamlines printing processes while delivering unmatched accuracy. Its advanced systems, including automatic stencil cleaning and 2D paste inspection, are designed to optimize productivity and ensure flawless results every time.

The G-Titan is more than a screen printer, it's a powerhouse built for Industry 4.0. With intelligent monitoring systems for humidity, temperature, and paste rolling diameter, it enables consistent, high-quality printing across complex SMT layouts. Complemented by its user-friendly 19" touchscreen interface and robust construction, the G-Titan guarantees reliability, efficiency, and precision, making it the ultimate solution for manufacturers aiming to elevate their operations.

## SEAMLESS, HIGH-QUALITY PRINTING

---



### Stencil Lock

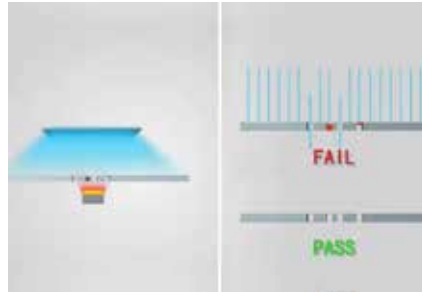
---

Vacuum-secured stencil eliminates vibration and ensures firm contact for ultra-fine pitch and flex circuits.



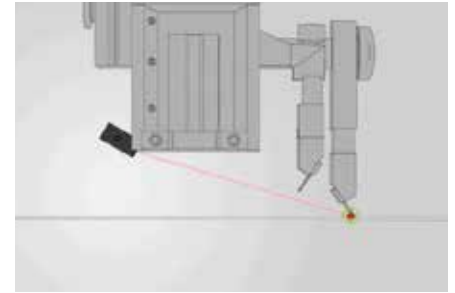
### Auto Stencil Cleaning

Dry, wet, and vacuum cleaning for perfect prints.



### Stencil Aperture Inspection

Ensures stencil integrity for flawless printing.



### Optimum Paste Control (OPC)

Closed-loop system ensures ideal paste levels with minimal waste.

## SPECIFICATION

ITEM	PERFORMANCE
Machine Alignment Capability	2Cmk @ ±10 microns @ 6 sigma
Process Alignment Capability	2Cpk @ ±18 microns @ 6 sigma
Core Cycle Time (excluding printing & cleaning time)	<8.5 secs
Product Changeover Time	<3 secs
New Product Set-up Time	<10 secs

ITEM	FACILITIES REQUIREMENT
Power Supply	AC220V ± 10% 50/60Hz
Power Consumption	3kW
Air Supply	4 6Kgf/cm <sup>2</sup>
Air Consumption	5L/min
Dimension (excluding signal tower)	1,240mm (L) x 1,560mm (W) x 1,490mm (H)
Machine Weight	1,200kg

ITEM	OPERATOR INTERFACE
Hardware	Touch Screen LCD Monitor, Mouse & Keyboard
Operating System (OS)	Windows 7 or Higher
Control Method	Industrial PC controlled
I/O Interface	SMEMA Standard

ITEM	BOARD HANDLING
Max. Size (L x W)	510mm x 510mm
Min. Size (L x W)	50mm x 50mm
Thickness	0.4-6mm
PCB Thickness Adjustment	Automatic
PCB Max. Weight	5kg
PCB Edge Clearance	3mm
PCB Bottom Clearance	23mm
PCB Warpage	Max 1% diagonally
Clamping Method	Auto retractable top clamp, motor controlled side clamp
Support Method	Magnetic support pins, bars, blocks, vacuum suction
Conveyor Direction	L to R, R to L, R to R, L to L (software control)
Conveyor Height	900 ± 40mm
Conveyor Speed (max.)	1,500 mm/s
Conveyor Width Adjustment	Automatic

ITEM	PRINTING PARAMETERS
Stencil Frame Size (L x W)	Adjustable, 470mm x 370mm to 737mm x 737mm
Print Gap (snap-off)	0~20mm
Printing Table Adjustment Range	X:±10mm, Y:±10mm
Print Speed	10~200mm/s
Squeegee Pressure	0.5-10kg (program control)
Squeegee Type	Std.: OPC Squeegee 300mm, 450mm & Metal Squeegee 520mm Option: Rubber
Squeegee Angle	Std. 60°, Option 45°, 50°, 55°
Cleaning System	Auto wet, dry, vacuum (Software select)

ITEM	OPTICAL SYSTEM
Field-of-View (FOV)	10mm x 8mm
Fiducial Types	Circle, triangle, square, diamond, cross
Fiducial Size	0.5~4.0mm
Vision Methodology	Digital CCD camera look up & down
2D Inspection	Max. 100 windows to inspect missing & insufficient (std.)

## Industrial solutions, innovation and precision.

**Wilfredo Fonseca**

**CEO**  
wfonseca@solid-mfg.com  
+1 (915) 777.1333

**William Félix**  
**Regional Sales Manager**  
wfelix@solid-mfg.com  
+1 (915) 777.0739

**Ramón Aguilar**  
**Sales Executive**  
raguilar@solid-mfg.com  
+52 (656) 144.5502

**Maros Espinoza**  
**Sales Manager**  
mespinoza@solid-mfg.com  
+1 (915) 777.0766

**Alan Santiesteban**  
**Sales Executive**  
asanti@solid-mfg.com  
+52 (656) 345.5806

**Diego González**  
**Sales Executive**  
dgonzalez@solid-mfg.com  
+1 (915) 999.3434

**Heriberto Huerta**  
**Sonora Commercial Representative**  
hhuerta@solid-mfg.com  
+52 (662) 417.6320

**Enrique Torres**  
**Sales**  
etorres@solid-mfg.com  
+52 (33) 1974.5755

**Francisco Zamudio**  
**Business Development**  
fzamudio@solid-mfg.com  
+1 (915) 343.2203

**José Pérez**  
**Sales**  
jperez@solid-mfg.com  
+52 (656) 388.1220

**Johanny Jacome**  
**Northeast Sales Manager**  
jjacome@solid-mfg.com  
+52 (81) 2080.8334

**José Luis Díaz**  
**Commercial Manager Tijuana**  
jdiaz@solid-mfg.com  
+52 (656) 754.2302

**Saúl Ramírez**  
**Automation Manager**  
sramirez@solid-mfg.com  
+1 (915) 777.1175

**Jaime Chavarria**  
**Service Technician**  
jchavarria@solid-mfg.com  
+1 (915) 777.1136

**Emiliano Zamudio**  
**Technical Support**  
emiz@solid-mfg.com  
+52 (656) 806.7193

**José Luna**  
**Field Service Engineer**  
jluna@solid-mfg.com  
+52 (656) 345.5796



## OFFICES IN MEXICO AND THE UNITED STATES

### Offices in Mexico

#2225 Parque Industrial Fernández C.P. 32649  
Cd. Juárez, Chih. Méx.  
Ph. +52 (656) 624.1530

### Offices in the USA

1410 Gail Borden C-4  
El Paso, TX. 79935  
Ph. +1 (915) 300.2401

### More information

info@solid-mfg.com  
www.solid-mfg.com

